

# **TreeWorks Mobile**

## **Setting up a Mobile Partnership in Windows 7**

These slides are intended to be used to setup a Windows Mobile based device with the Mobile Device Center that is inherent in Windows 7

See this helpful link for more information on Microsoft's Mobile Device Center:

<http://support.microsoft.com/kb/931937>



When the device is connected for the first time you'll see the Mobile Device Center Connection Wizard.

[Click to Begin]

Set up your device

Get Outlook contacts, calendar, e-mail and other information on your device.

Connect without setting up your device

✓ Connected








Set Up Windows Mobile Partnership

Only Check "Files" Then click Next

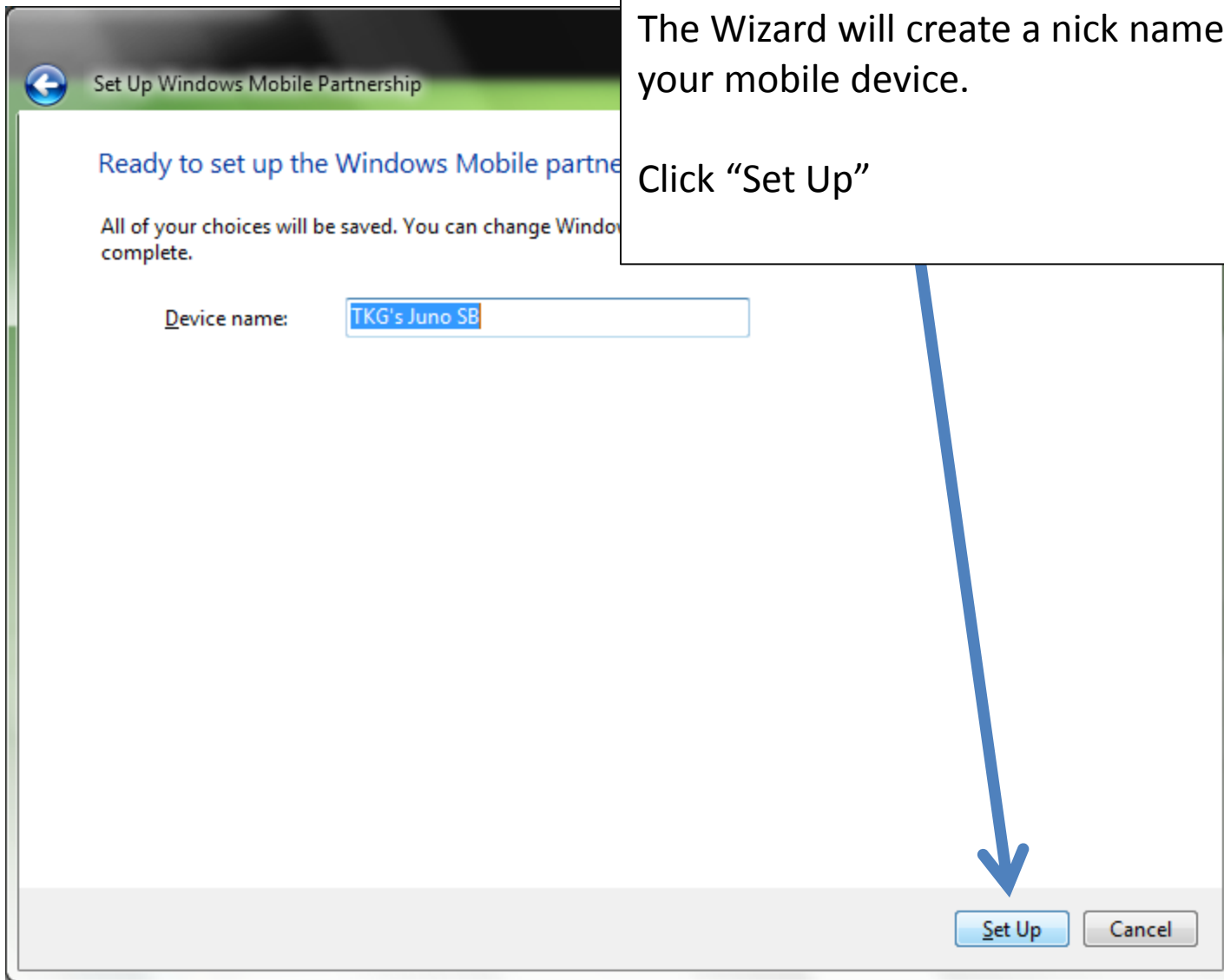
### What kinds of items do you want to sync?

The types of content you select will be kept up to date on both your device and the PC.

-  **Tasks**  
Keep Tasks up to date
-  **Notes**  
Keep Outlook notes up to date
-  **Mobile Favorites**  
Sync your favorite Web links
-  **Files**  
Sync files between your PC and device
-  **Microsoft Office OneNote**

Next

Cancel



Set Up Windows Mobile Partnership

Ready to set up the Windows Mobile partnership

All of your choices will be saved. You can change Windows Mobile Partnership settings at any time after setup is complete.

Device name:



TKG's Juno SB

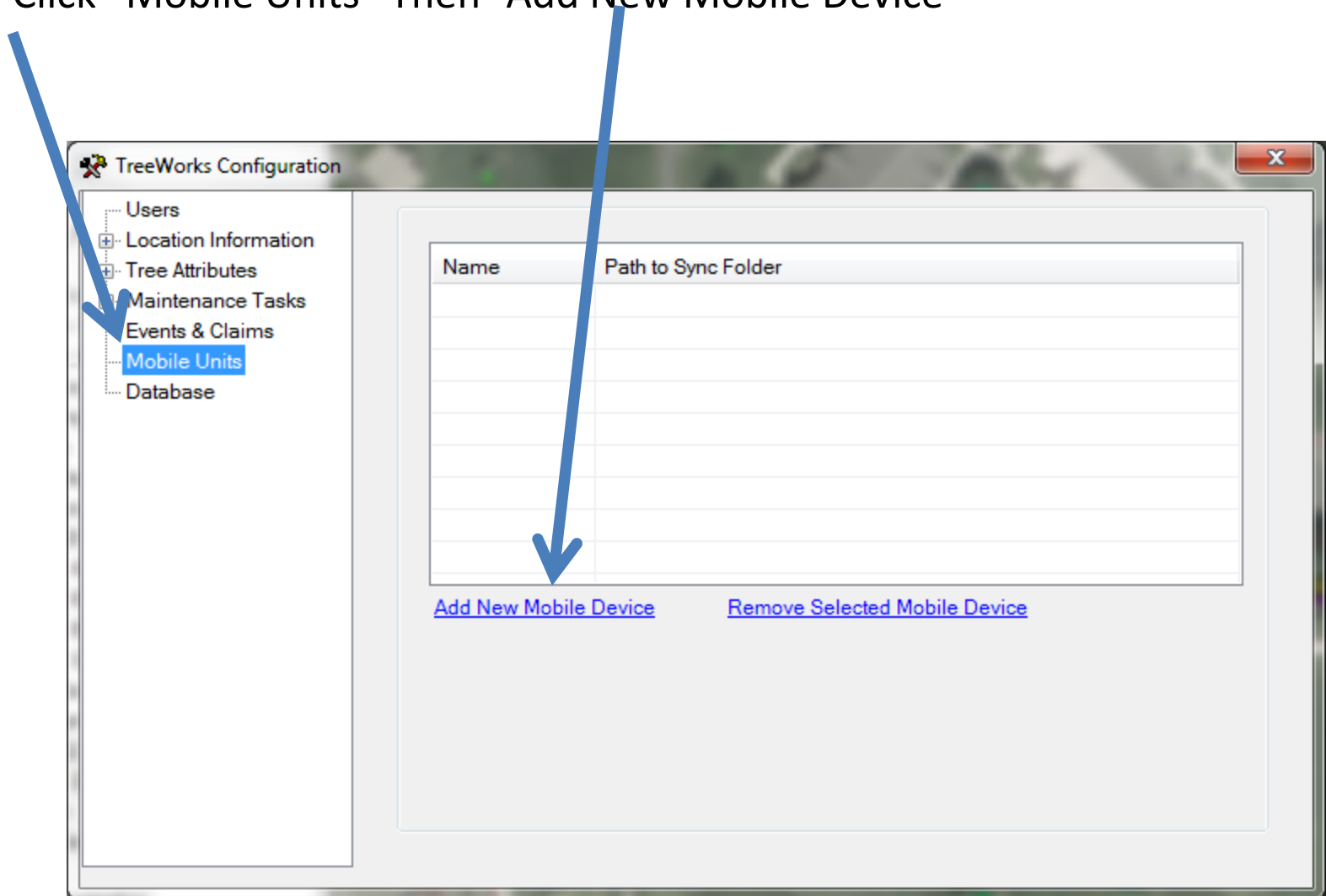
Set Up

Cancel

The Wizard will create a nick name for your mobile device.

Click "Set Up"

1. Open your TreeWorks Map
2. Click the Yellow Key to Login 
3. Click the TreeWorks Configuration Icon 
4. Click “Mobile Units” Then “Add New Mobile Device”



1. Enter the mobile unit name
2. For Handheld. Leave default \treeworks (need to update document)
3. For Juno Handheld, Choose the option shown in the image below
4. Click "Save"

